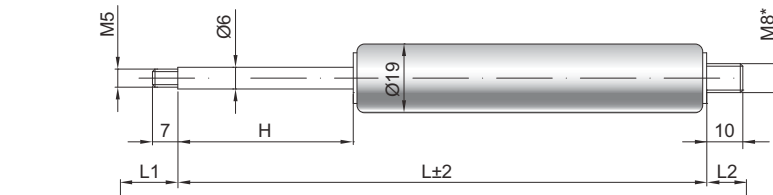


Gas spring G 06-19

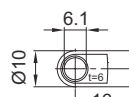
Extension force F1	40 - 400 Newton
Progression	17 %
Piston rod	Ø 6 mm, hard chrome-plated steel
Pressure pipe	Ø 19 mm, black lacquered steel
Connections	Blue galvanised steel

GZ 10

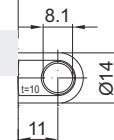


GZ 10

AU 16



Details



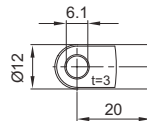
AB 11

Only possible on the cylinder

Standard strokes H (mm)

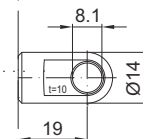
20, 30, 40, 50, 60, 70, 80, 100, 110,
120, 140, 150, 160, 170, 180, 190, 200,
220, 250, 300

AS 20



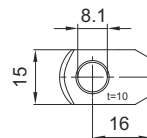
Default length GL

$L = 2 \times H + 55$
 $GL = L + L1 + L2$



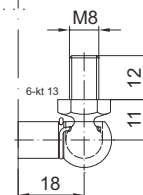
AU 19

AR 16



Extras

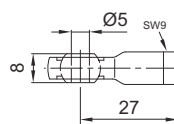
Cross valve
Fat chamber
Valve
Protection tube
Floating piston
Sealing system
Low temperature version
High temperature version
Friction element



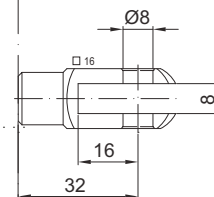
WG 18

up to max. 800 N

AG 27

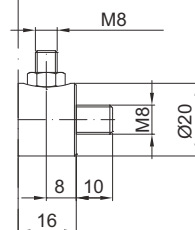
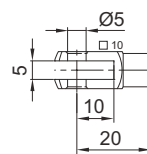


* Threaded base piece optionally with
M5 or M8



GA 32

GA 20



QV GZ

WX 22

