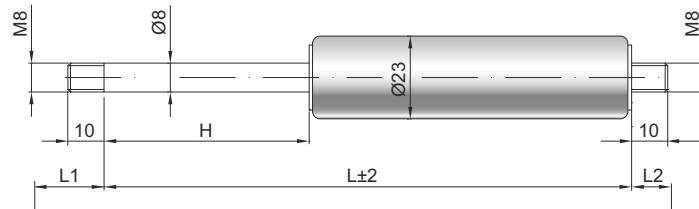


## Gas spring G 08-23

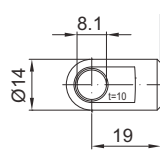
<b>Extension force F1</b>	50 - 700 Newton
<b>Progression</b>	18 %
<b>Piston rod</b>	Ø 8 mm, hard chrome-plated steel
<b>Pressure pipe</b>	Ø 23 mm, black lacquered steel
<b>Connections</b>	Blue galvanised steel

GZ 10



GZ 10

AU 19



### Details

#### Standard strokes H (mm)

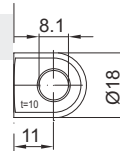
40, 50, 60, 70, 80, 100, 110, 120,  
140, 150, 160, 180, 200, 220, 250,  
300, 350, 400, 500

#### Default length GL

$L = 2 \times H + 70$   
 $GL = L + L1 + L2$

#### Extras

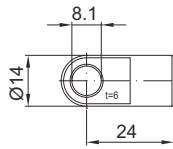
Scraper  
Cross valve  
Fat chamber  
Valve  
Protection tube  
Floating piston  
Slide-in safety device  
Sealing system  
Low temperature version  
High temperature version  
Friction element



AB 11

*Only possible on the cylinder*

AS 24

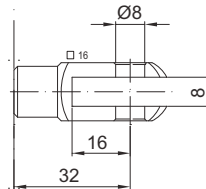


#### Default length GL

$L = 2 \times H + 70$   
 $GL = L + L1 + L2$

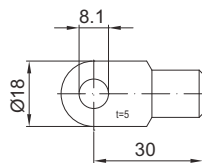
#### Extras

Scraper  
Cross valve  
Fat chamber  
Valve  
Protection tube  
Floating piston  
Slide-in safety device  
Sealing system  
Low temperature version  
High temperature version  
Friction element



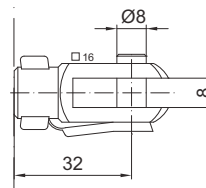
GA 32

AS 30



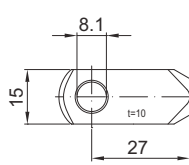
#### Extras

Scraper  
Cross valve  
Fat chamber  
Valve  
Protection tube  
Floating piston  
Slide-in safety device  
Sealing system  
Low temperature version  
High temperature version  
Friction element



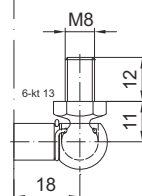
GG 32

AR 27



#### Extras

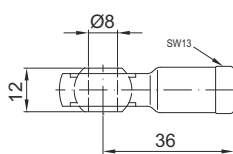
Scraper  
Cross valve  
Fat chamber  
Valve  
Protection tube  
Floating piston  
Slide-in safety device  
Sealing system  
Low temperature version  
High temperature version  
Friction element



WG 18

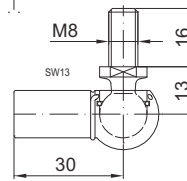
*up to max. 800 N*

AG 36

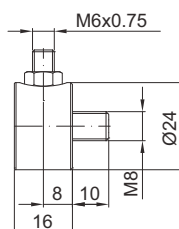


#### Extras

Scraper  
Cross valve  
Fat chamber  
Valve  
Protection tube  
Floating piston  
Slide-in safety device  
Sealing system  
Low temperature version  
High temperature version  
Friction element



WG 30



QV GZ