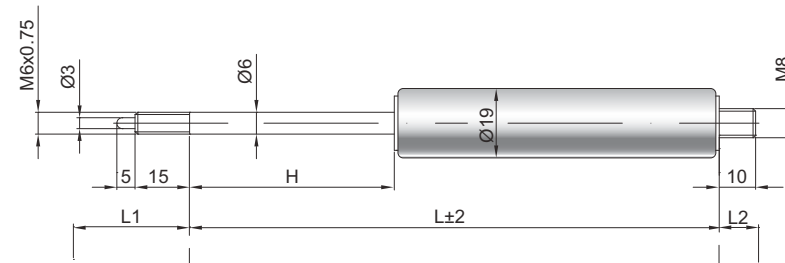


Rigid locking gas spring S 06-19

Extension force F1	60 - 400 Newton
Progression	35 %
Piston rod	Ø 6 mm, hard chrome-plated steel
Pressure pipe	Ø 19 mm, black lacquered steel
Connections	Blue galvanised steel

GZ 15



GZ 10

L1 = Installation length
of the release system

Details

Standard strokes H (mm)

20, 30, 40, 50, 60, 80, 90, 100, 120, 150

Default length GL

$$L = 2,4 \times H + 65 \text{ GL}$$

$$= L + L1 + L2$$

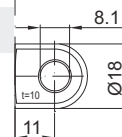
Release

Release pin protrudes 5 mm
Release travel 2 - 4 mm
Blocking force: Push ~ 3 x F1
Pull max. 3 x F1

Observe **technical regulations**

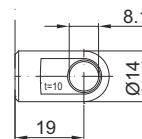
Extras

Valve

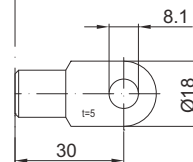


AB 11

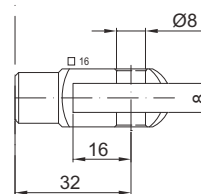
Only possible on the cylinder



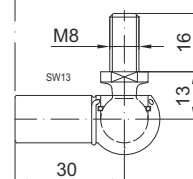
AU 19



AS 30



GA 32



WG 30