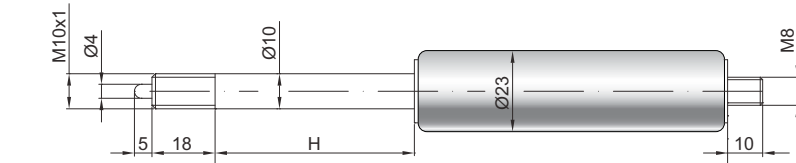


Spring-loaded lockable gas springs F 10-23

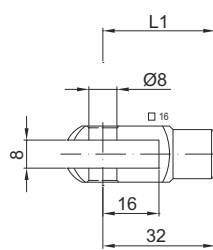
Extension force F1	150 - 1200 Newton
Progression	35 %
Piston rod	Ø 10 mm, hard chrome-plated steel
Pressure pipe	Ø 23 mm, black lacquered steel
Connections	Blue galvanised steel

GZ 18

GZ 10



GX 32



Details

Standard strokes H (mm)

20, 25, 30, 35, 40, 50, 60, 65, 70, 80, 90, 100, 110, 120, 130, 135, 140, 150, 160, 165, 180, 200, 210, 220, 230, 250, 300, 350, 400, 450, 500

Default length GL

$$L = 2 \times H + 90$$

$$GL = L + L1 + L2$$

Release standard

Release pin protrudes 5 mm
Release travel 2 - 4 mm

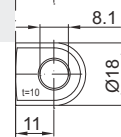
Release Optional 0.1 mm

Release pin 3 mm protruding
Release travel 0.1 - 0.2 mm

Observe **technical regulations**

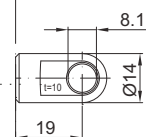
Extras

Piston rod seal
Fat chamber
Valve
Protection tube
Short release

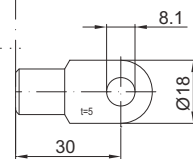


AB 11

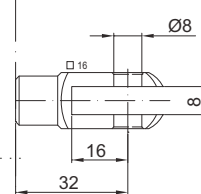
Only possible on the cylinder



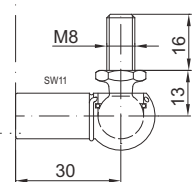
AU 19



AS 30



GA 32



WG 30