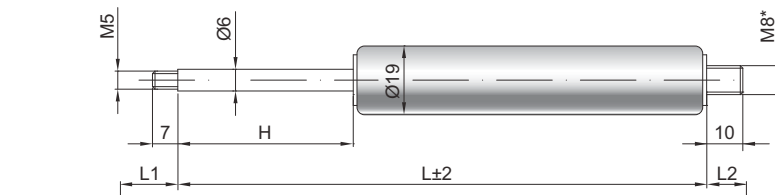


Gasdruckfeder G 06-19

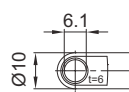
Ausschubkraft F1	40 - 400 Newton
Progression	17 %
Kolbenstange	Ø 6 mm, Stahl hartverchromt
Druckrohr	Ø 19 mm, Stahl schwarz lackiert
Anschlüsse	Stahl blau verzinkt

GZ 07



GZ 10

AU 16



Details

Standardhöhe H (mm)

20, 30, 40, 50, 60, 70, 80, 100, 110,
120, 140, 150, 160, 170, 180, 190, 200,
220, 250, 300

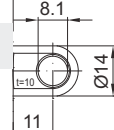
Standardlänge GL

$L = 2 \times H + 55$
 $GL = L + L1 + L2$

Extras

Querventil
Fettkammer
Ventil
Schutzrohr
schwimmender Kolben
Dichtsystem
Niedertemperaturausführung
Hochtemperaturausführung
Reibelement

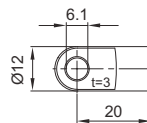
*Gewindebodenstück wahlweise mit
M5 oder M8



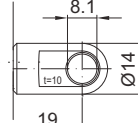
AB 11

Nur am Zylinder möglich

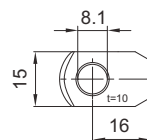
AS 20



AU 19

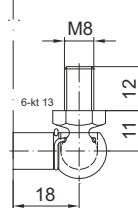


AR 16

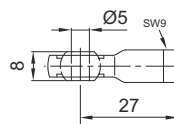


WG 18

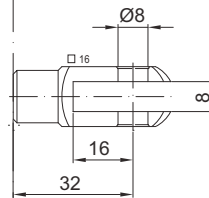
bis max. 800 N



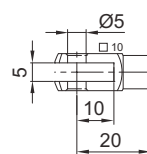
AG 27



GA 32



GA 20



QV GZ

WX 22

