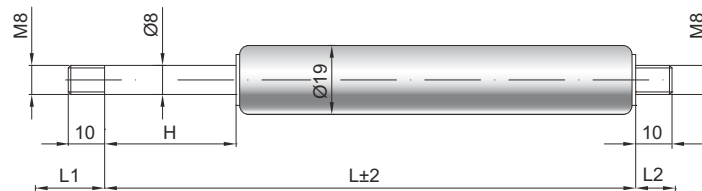


Gasdruckfeder G 08-19

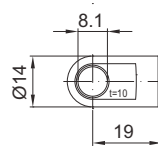
Ausschubkraft F1	50 - 700 Newton
Progression	30 %
Kolbenstange	Ø 8 mm, Stahl hartverchromt
Druckrohr	Ø 19 mm, Stahl schwarz lackiert
Anschlüsse	Stahl blau verzinkt

GZ 10



GZ 10

AU 19



Details

Standardhöhe H (mm)

40, 50, 60, 70, 80, 100, 110, 120, 140, 150, 160, 180, 200, 220, 250, 300, 350, 400, 500

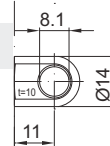
Standardlänge GL

$L = 2 \times H + 70$
 $GL = L + L1 + L2$

Extras

- 1 - Abstreifer
- 2 - Quervertil
- 4 - Fettkammer
- 5 - Ventil
- 6 - Schutzrohr
- 7 - schwimmender Kolben
- 8 - Einschubsicherung
- B3 - Dichtsystem
- NT - Niedertemperaturlösung
- HT - Hochtemperaturlösung
- RK - Reibelement

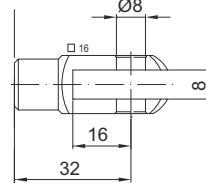
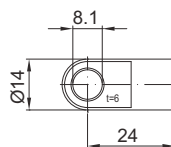
Weitere **Anschlüsse** finden Sie hier ▶
 Passende **Beschläge** finden Sie hier ▶



AB 11

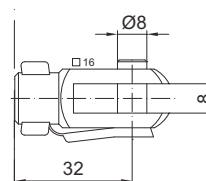
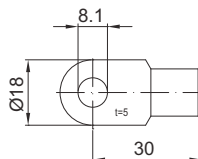
Nur am Zylinder möglich

AS 24



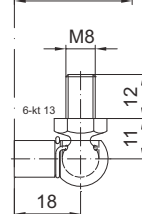
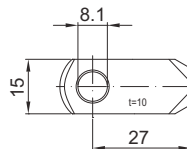
GA 32

AS 30



GG 32

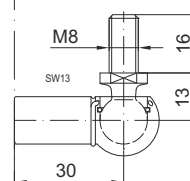
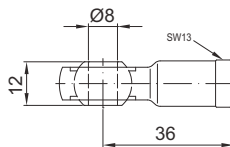
AR 27



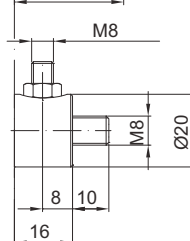
WG 18

bis max. 800 N

AG 36



WG 30



QV GZ