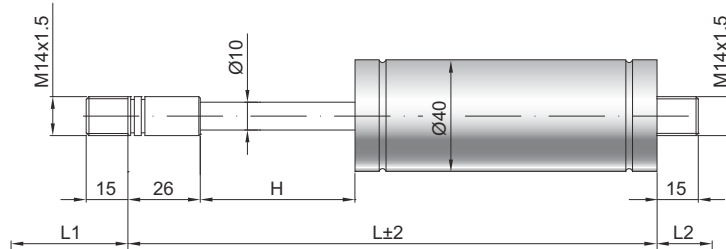


Gaszugfeder Z 10-40

Zugkraft F1	200 - 2000 Newton
Progression	40 %
Kolbenstange	Ø 10 mm, Stahl hartverchromt
Druckrohr	Ø 40 mm, Stahl schwarz lackiert
Anschlüsse	Stahl blau verzinkt

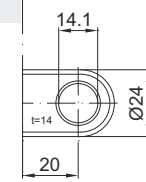
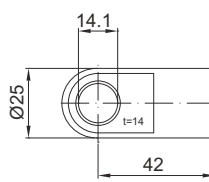
GZ 15

GZ 15



AU 42

AZ 20



Details

Standardhübe H (mm)

10, 40, 50, 60, 70, 90, 100, 110, 120,
140, 150, 170, 190, 200, 210, 240, 250,
290, 340, 350, 390, 440, 490, 590

Standardlänge GL

$L = 2 \times H + 150$
 $GL = L + L1 + L2$

Standardlieferumfang

Ventil an der Kolbenstange

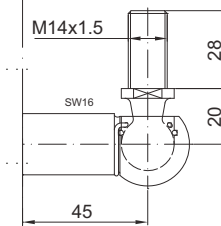
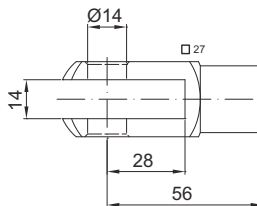
Extras

Fettkammer
Schutzrohr
Dichtsystem
Niedertemperaturausführung
Hochtemperaturausführung

Nur am Zylinder möglich

GA 56

WG 45



AG 57

