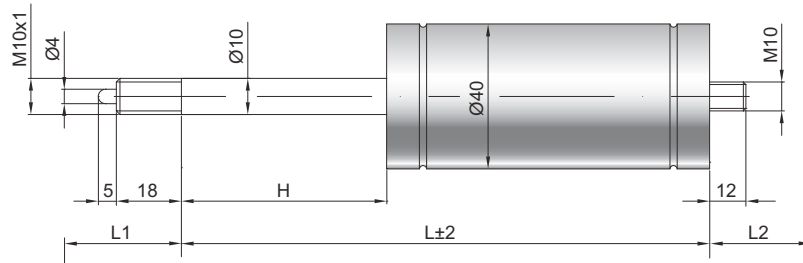


## Starr blockierbare Gasdruckfeder S 10-40

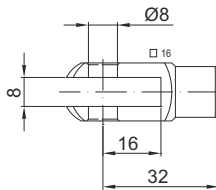
|                         |                                 |
|-------------------------|---------------------------------|
| <b>Ausschubkraft F1</b> | 250 - 1200 Newton               |
| <b>Progression</b>      | 33 %                            |
| <b>Kolbenstange</b>     | Ø 10 mm, Stahl hartverchromt    |
| <b>Druckrohr</b>        | Ø 40 mm, Stahl schwarz lackiert |
| <b>Anschlüsse</b>       | Stahl blau verzinkt             |

GZ 18



GZ 12

GX 32



### Details

#### Standardhöhe H (mm)

10, 15, 20, 25, 30, 40, 50, 55, 60, 70, 80, 90, 100, 110, 120, 125, 130, 140, 150, 155, 170, 190, 200, 210, 220, 230, 290, 340, 390, 440, 490

#### Standardlänge GL

$L = 2,2 \times H + 100$   
 $GL = L + L1 + L2$

#### Auslösung

Auslösestift 5 mm überstehend  
 Auslöseweg 2 - 4 mm  
 Blockierkraft: Druck ~ 12 x F1  
 Zug max. 3000 N

#### Technische Vorschrift beachten ▸

#### Standardlieferumfang

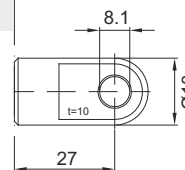
Ventil am Bodenstück

#### Extras

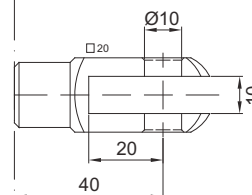
- 3 - Kolbenstangenabdichtung
- 4 - Fettkammer
- 5 - Ventil
- 6 - Schutzrohr

Weitere **Anschlüsse** finden Sie hier ▸

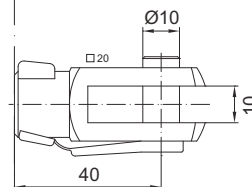
Passende **Beschläge** finden Sie hier ▸



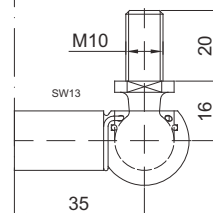
AU 27



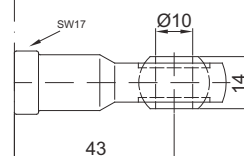
GA 40



GG 40



WG 35



AG 43