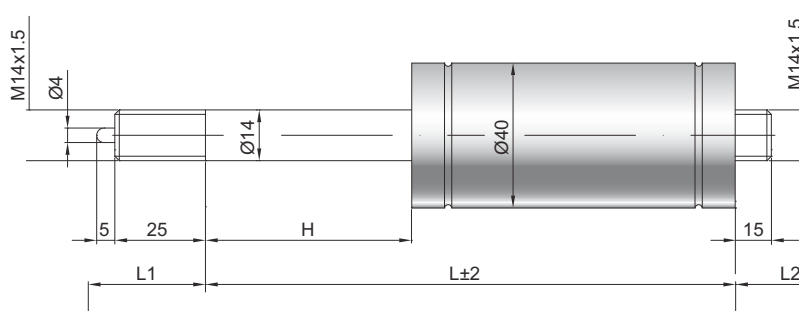


Spring-loaded lockable gas springs F 14-40

Extension force F1	250 - 2500 Newton
Progression	33 %
Piston rod	Ø 14 mm, hard chrome-plated steel
Pressure pipe	Ø 40 mm, black lacquered steel
Connections	Blue galvanised steel

GZ 25



GZ 15

L1 = Installation length of the release system

Details

Standard strokes H (mm)

20, 25, 30, 40, 50, 60, 80, 100, 120, 130, 140, 150, 160, 180, 200, 210, 220, 250, 300, 350, 400, 450, 500

Default length GL

$L = 2 \times H + 100 \text{ GL}$
 $= L + L1 + L2$

Release standard

Release pin protrudes 5 mm
 Release travel 2 - 4 mm

Observe **technical regulations** 


Standard scope of delivery

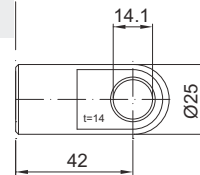
Valve on the base piece

Extras

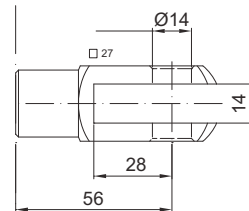
- 1 - Scraper
- 2 - Cross valve
- 4 - Fat chamber
- 6 - Protection tube



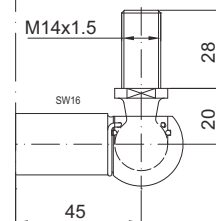
Release systems
 can be found here 



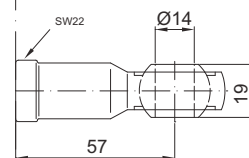
AU 42



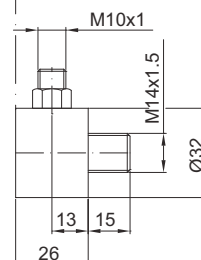
GA 56



WG 45



AG 57



QVGZ